



# LIGHTCHEM LIMITED

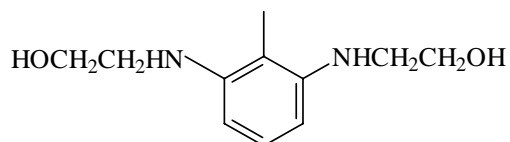
地址：中国杭州下城区新市街64号粮油大厦417室. 邮编: 310014

Add: Room 417, Liangyou Building, No. 64 Xinshi Street, Hangzhou, China. P.C. 310014

Tel: +86-571-85983207/56330213, Fax: +86-571-56256861, E-mail: sales@light-chem.com, Web: [www.light-chem.com](http://www.light-chem.com)

---

## TECHNICAL DATA SHEET



TRADE NAME: LIGHT-PURPLE BS

INCI NAME: 2,6-DIHYDROXYETHYLAMINOTOLUENE

SYNONYMS NAME: 2,6-BIS-(BETA-HYDROXYETHYLAMINO)TOLUENE

CAS NO.: 149330-25-6

EINECS NO.: NOT AVAILABLE

MF: C11H18N2O2

MW: 210.27

TYPE: SEMI-PERMANENT/NON-OXIDATION

TYPICAL APPLICATION: PURPLE

CAS NO.: 4926-55-0

MF: C<sub>8</sub>H<sub>10</sub>N<sub>2</sub>O<sub>3</sub>

MW: 182