



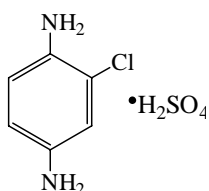
LIGHTCHEM LIMITED

地址：中国杭州下城区新市街64号粮油大厦417室. 邮编: 310014

Add: Room 417, Liangyou Building, No. 64 Xinshi Street, Hangzhou, China. P.C. 310014

Tel: +86-571-85983207/56330213, Fax: +86-571-56256861, E-mail: sales@light-chem.com, Web: www.light-chem.com

TECHNICAL DATA SHEET



TRADE NAME: LIGHT-OCPPDS

INCI NAME: O-CHLORO-P-PHENYLENE DIAMINE SULFATE

SYNONYMS NAME: 2-CHLORO-P-PHENYLENEDIAMINE SULFATE

2-CHLORO-1,4-DIAMINOBENZENE SULFATE

CAS NO.: 61702-44-1

EINECS NO.: 228-291-1

MF: C₆H₉O₄N₂SCL

MW: 240.5

TYPE: OXIDATION BASE (THE DERIVED PRODUCT OF PPD BUT MORE STABLE AND LESS IRRITATIVE)

TYPICAL APPLICATION: BLACK